



Toll Free: 866-288-2522

FLUIDIZING MEDIA



PMF's **SINTERPORE®** media is ideal for fluidized transport and handling of bulk powder materials. **SINTERPORE®** laminates are permanently bonded under precise diffusion bonding (sintering) conditions to yield robust monolithic materials used in a wide variety of fluidizing applications.

FEATURES AND BENEFITS OF **SINTERPORE®** FLUIDIZING MEDIA

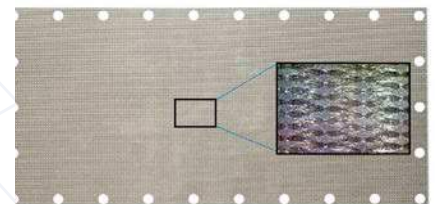
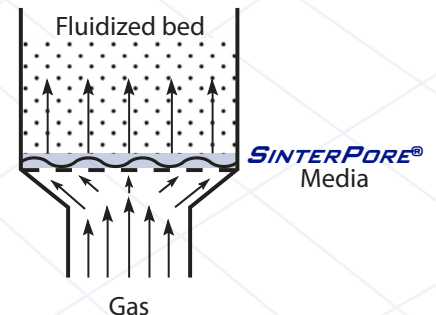
The multilayer laminate construction results in a strong product with precisely controlled porosity, uniform pore sizes and distribution. The media provides uniform distribution of gas and air flow for particulate fluidization and aeration.

ADDITIONAL BENEFITS

- Cleanability
- Heat resistant
- Abrasion resistant
- Easily fabricated
- Uniform flow
- Fixed pore geometry

APPLICATIONS

- Fluidizing beds
- Aerator for hoppers
- Air slides, rolls and bearings
- Resin and catalyst beds
- Vacuum forming and molding
- Air gravity conveyors
- Flame and spark arrestors
- Spargers



Porous Metal Filters, Inc.
19994 Hickory Twig Way, Spring TX, 77388
Toll Free: 866-288-2522 Tel: 281-719-1352 Fax: 281-719-1351
www.pmfilter.net sales@pmfilter.net



Technical information is subject to change





Toll Free: 866-288-2522

FLUIDIZING MEDIA

SINTERPORE® sheets can be ordered in most common alloys for corrosion resistance and can be easily cut, punched, sheared, welded and formed like any other sheet steel product to custom fit any application.

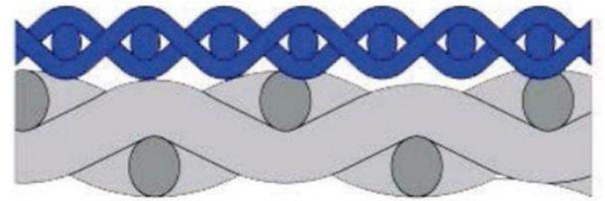
SPECIFICATIONS

- Standard alloys: 304, 304L, 316, 316L, Alloy20 (also available in Inconel 600 and 625, Monel, and Hastalloy upon request).
- Operating temperature 1000° F.
- Standard sheet sizes: 18" x 48" and 20" x 48". Custom sizes available upon request. Maximum laminate size without welding is 24" x 60" (larger sheets available with welds, maximum panel width with welds 120").

MULTI-LAYER DIFFUSION BONDED STRUCTURE

SINTERPORE® is available in 2-layer and 3-layer composite structures depending upon flow requirements. Each layer in the laminate performs a specific function in the structure. Heavy meshes provide strength and support to finer meshes which provide flow distribution and flow barriers.

2-layer **SINTERPORE®** Media Structure



	Part Number	Number of Layers	Mean Air Flow (SCFM/SF @ 2" W.C.)	Max Thickness (inches)
Lo-Perm	F-PMF-316L-SP-LF-05	3	5	0.064
	F-PMF-316L-SP-LF-10	3	10	0.069
	F-PMF-316L-SP-LF-25	3	25	0.073
Hi-Perm	F-PMF-316L-SP-HF-100	2	100	0.052
	F-PMF-316L-SP-HF-200	2	200	0.060
	F-PMF-316L-SP-HF-400	2	400	0.072

ENGINEERED PORE STRUCTURE AND FLOW DYNAMICS

In addition to the standard **SINTERPORE®** low perm and high perm media, custom designs can be specified for almost any application. Strength, pore size, porosity, tortuosity, permeability and edge flow resistance all can be designed to a given specification.

Porous Metal Filters, Inc.
19994 Hickory Twig Way, Spring TX, 77388
Toll Free: 866-288-2522 Tel: 281-719-1352 Fax: 281-719-1351
www.pmfiler.net sales@pmfiler.net



Please note technical information subject to change